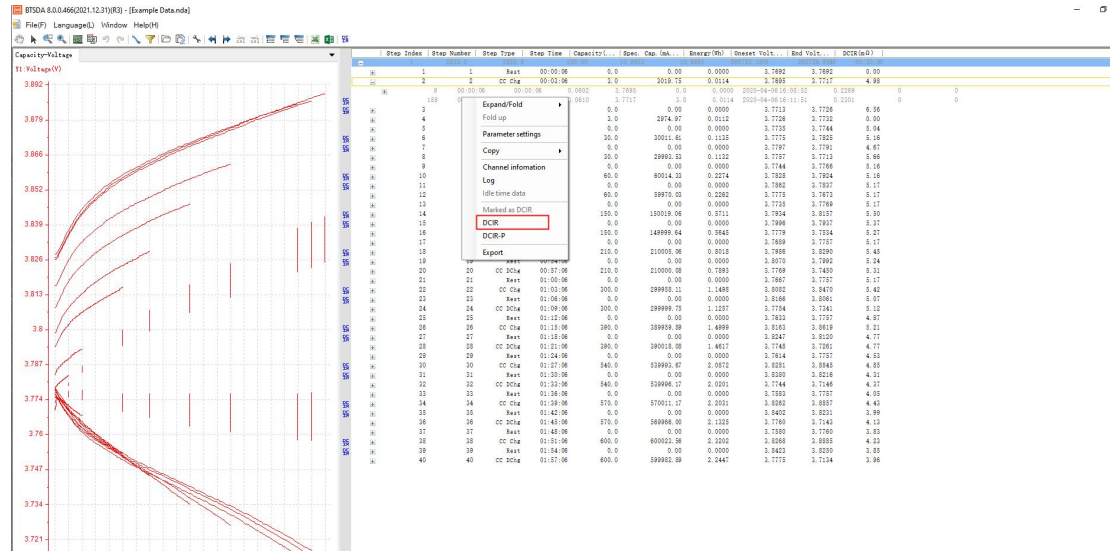
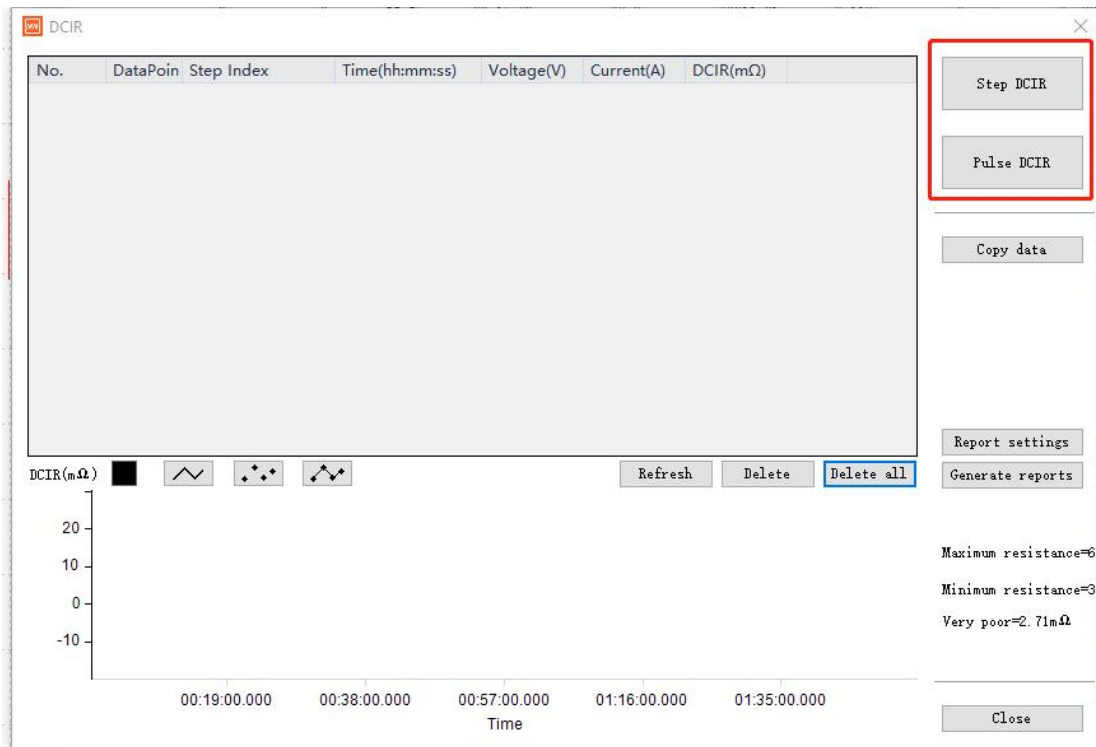


This article will Show how to get DCIR by using Neware Machines.

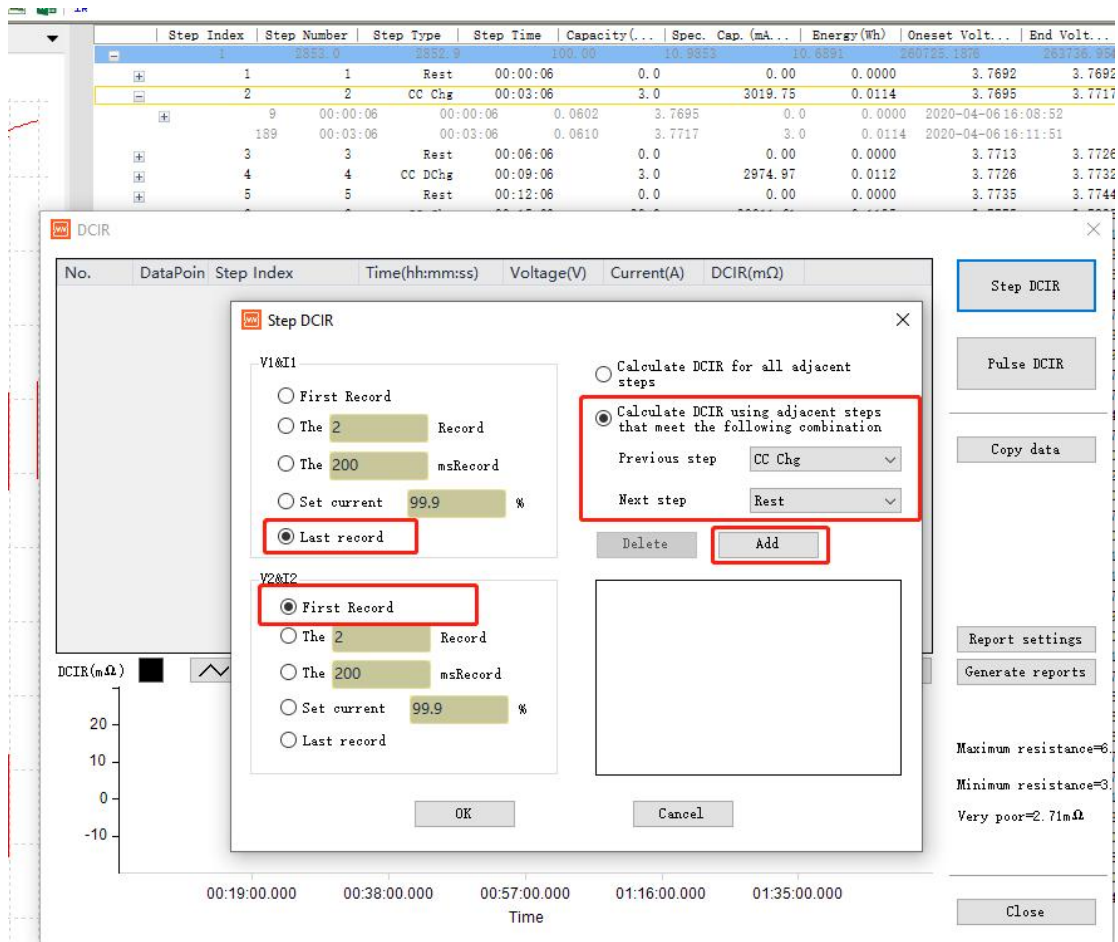
1. Open the BTSDA interface, open the data in BTSDA, right click the data record area and click DCIR.



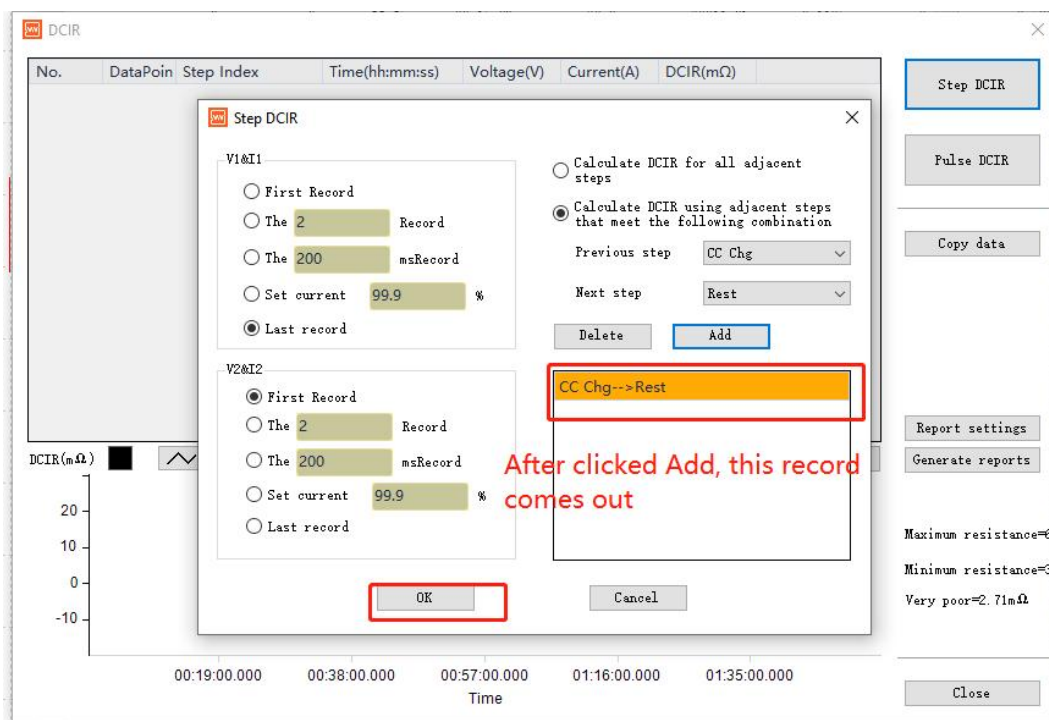
2. Click Step DCIR or Pulse DCIR depending on real situation.



3. Select "Calculate DCIR using adjacent steps that meet the following combination", please make sure the two steps set are indeed adjacent, then click "add". Select Last record on section V1 & I1, select First Record on section V2 & I2.



4. After the record below come out, click OK.



5.DCIR data will display here

